

Examples of documents to be submitted in the event that local prices, exchange rates, seasons, etc., force the use of hotel with unit prices that exceed the maximum limit.

- (1) Comparative data on the cost of multiple hotels (at least 3 hotels) in the area
- (2) Map showing destination and the hotel
- (3) Documents showing the room class, facilities, etc. of the hotel
- (4) Other supplementary materials indicating the purpose and necessity of travel to the destination

(1) Comparative data on the cost of multiple hotels (at least 3 hotels) in the area

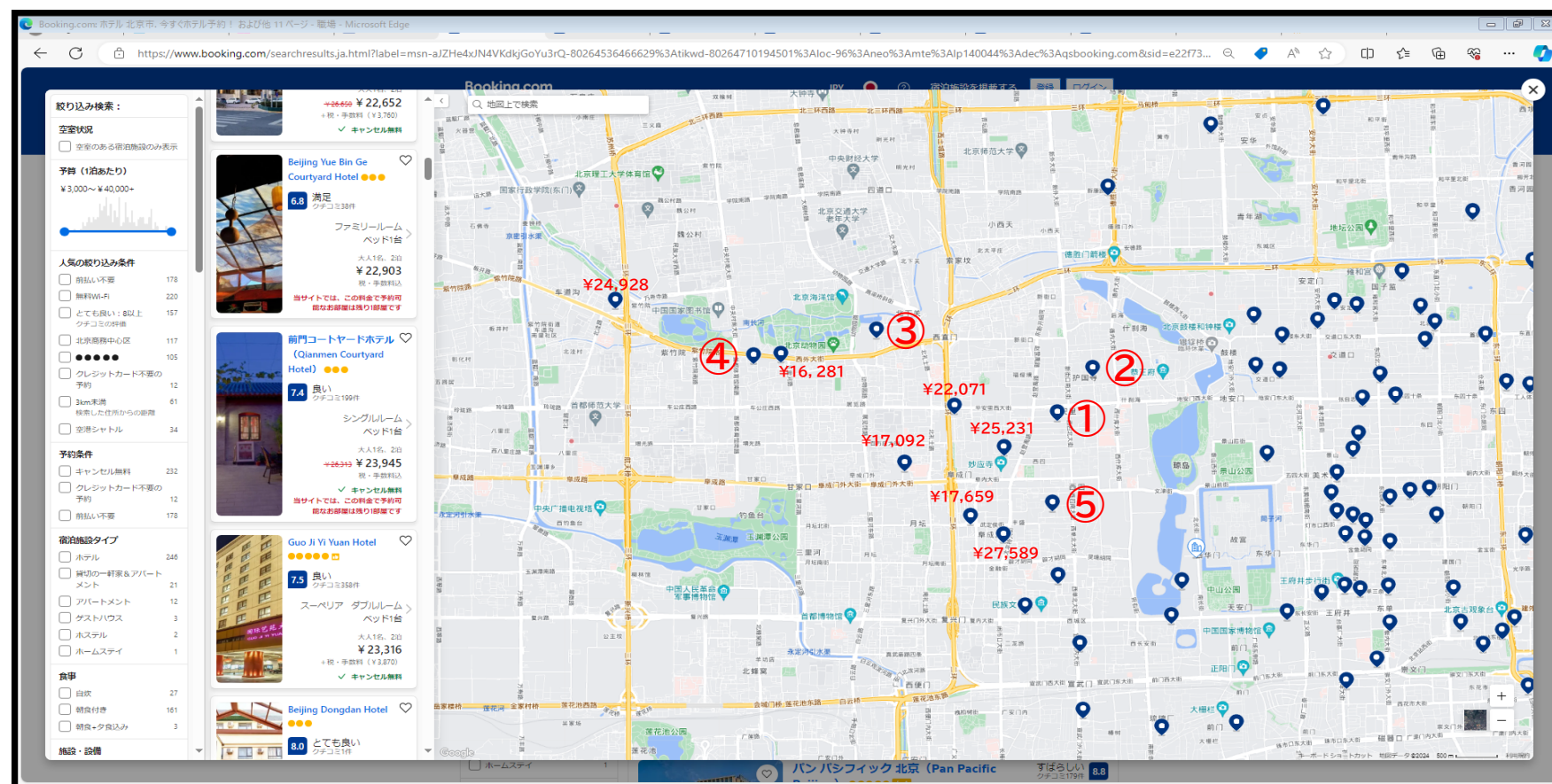
Assume the destination is the Beijing Zoo and travel period is 2-nights (October 8 to 10).

	Total Room charge	Per night	With or without meals	Distance from destination	Security
① Beijing Yue Bin Ge Courtyard Hotel	¥23,041	¥11,521	Without	55 min. (3.7km)	Since it is located near the tourist area and faces a main street, the hotels listed here are considered safe. In addition, for hotels ①, ② and ⑤, I plan to use local buses to destination.
② Guipu Beihai Courtyard Hotel	¥26,609	¥13,305	Without	54 min. (3.7km)	
③ Jinjiang Inn Beijing Zoo	¥30,173	¥15,087	Without	12 min. (750m)	
④ Beijing New Century Hotel	¥33,003	¥16,502	Without	18 min. (1.3km)	
⑤ Kelly's Courtyard Hotel	¥27,343	¥13,672	With breakfast	69 min. (4.7km)	

Although ① is the least expensive, considering the convenience of getting to the destination, I apply for stay at ③.

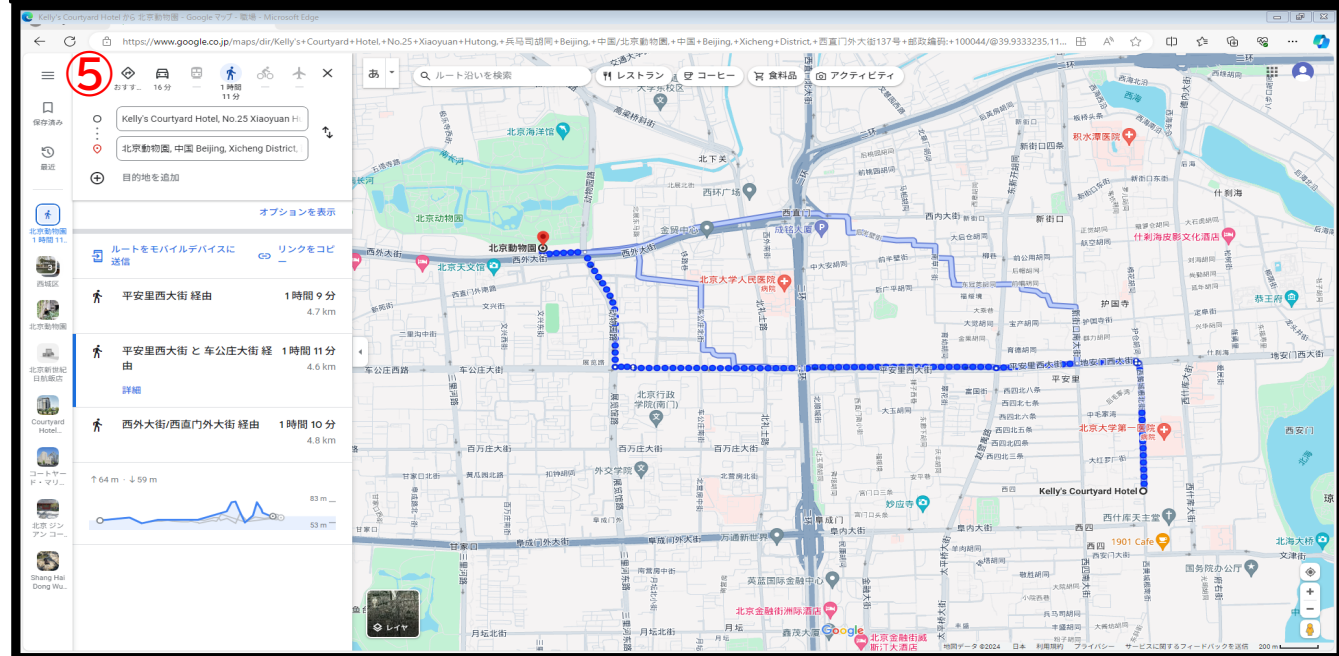
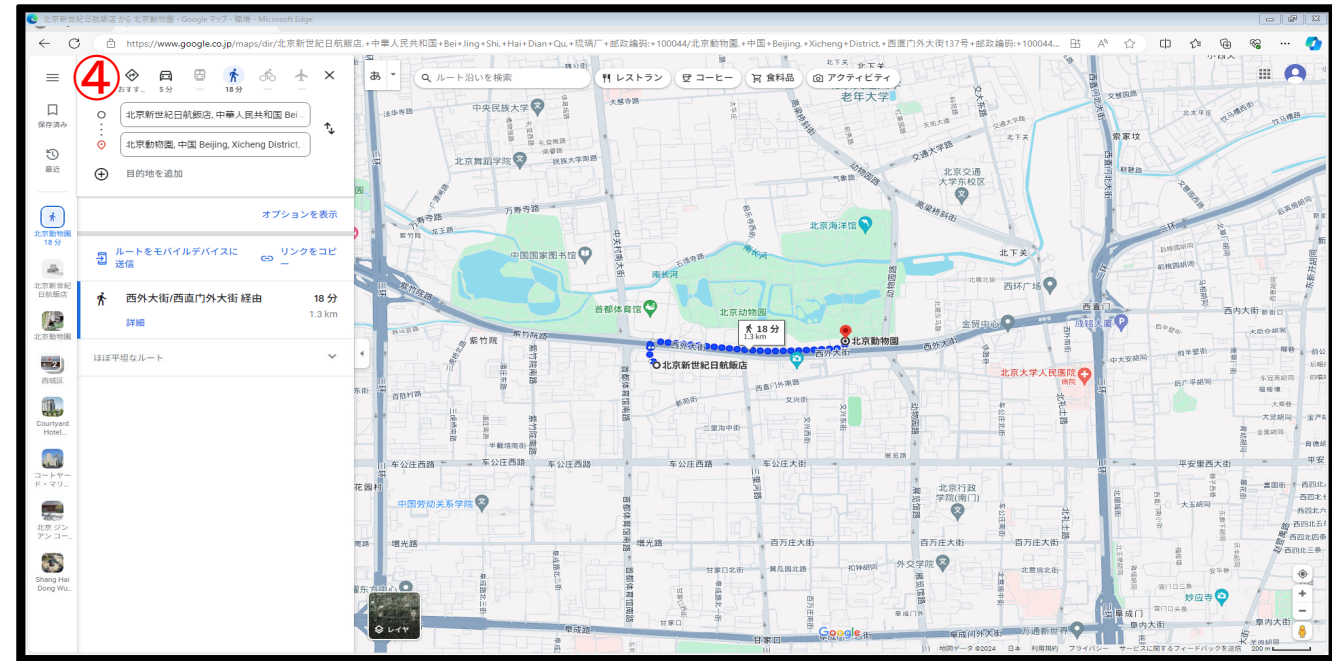
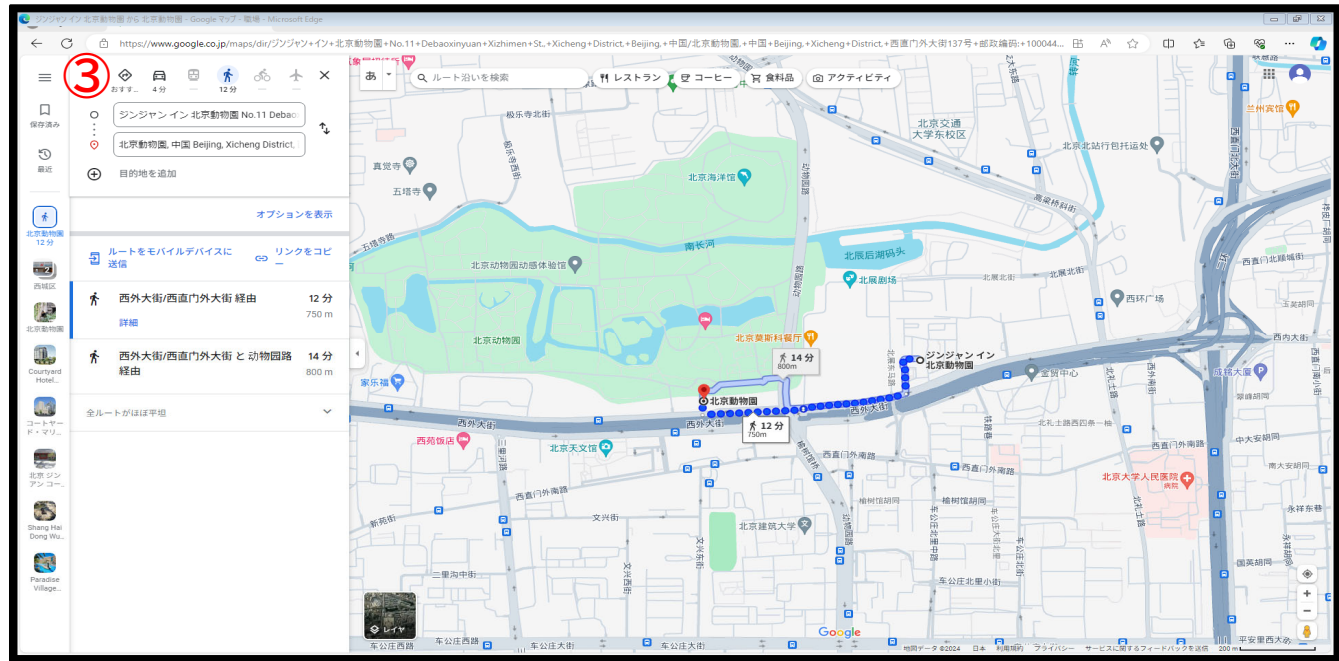
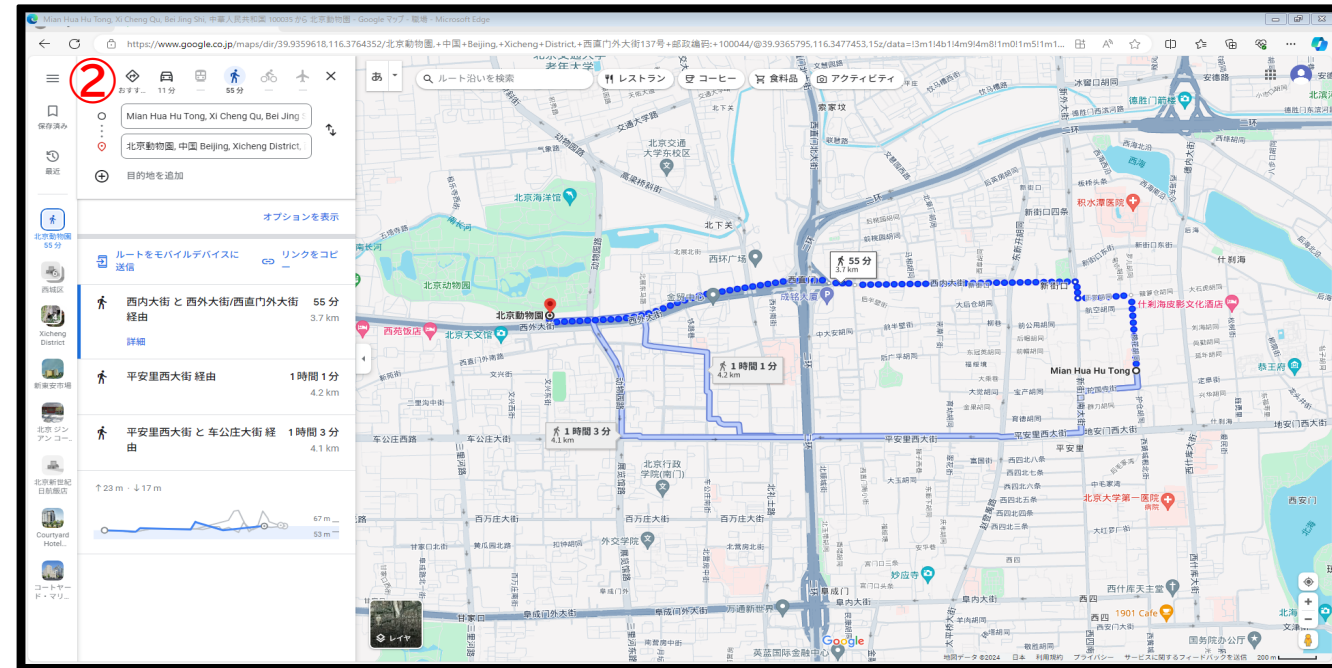
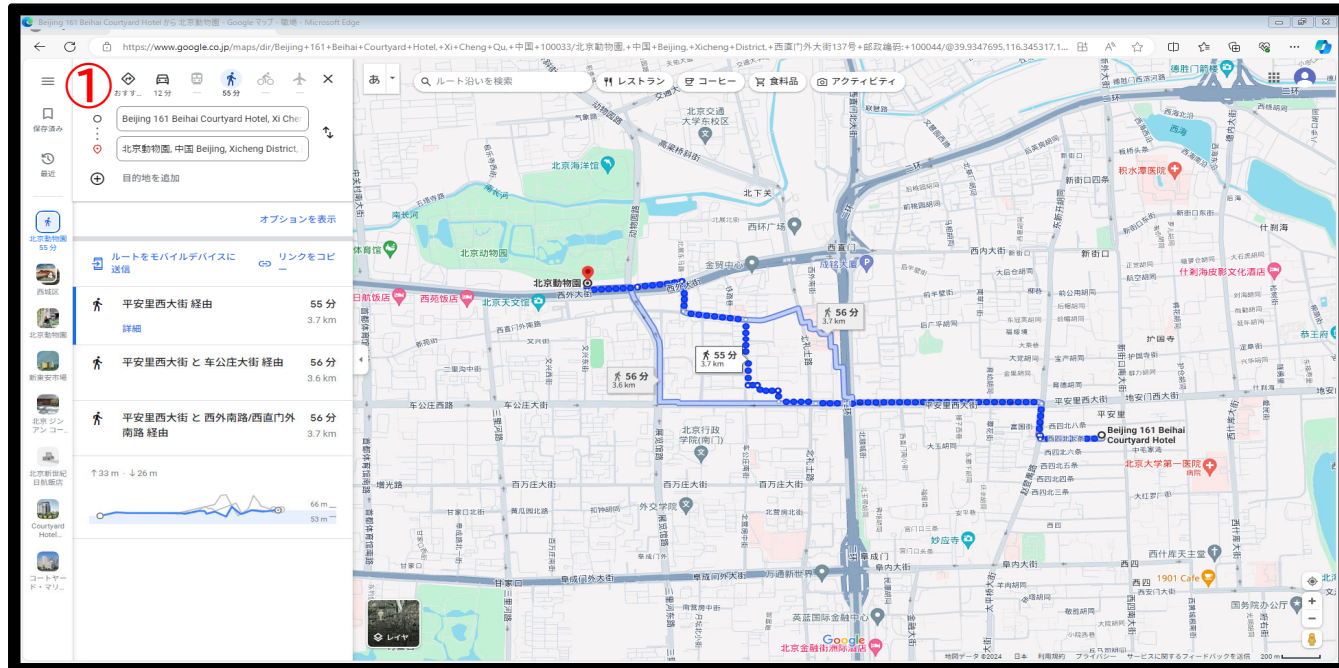
(2) Map showing destination and the hotel

\*For reference purposes, prices other than those of the comparison hotels in ① through ⑤ are also included on purpose.





(2) Map showing destination and the hotel (by hotel)





(3) Documents showing the room class, facilities, etc. of the hotel

※ Please set the actual date and number of guests and search. (The same applies to comparisons between official sites.)

※ Comparisons between multiple travel agencies are not allowed.

The image displays five Booking.com search results for hotels in Beijing, China, for a stay from Tuesday, October 8 to Thursday, October 10, 2024, for 1 adult and 0 children in 1 room. The hotels shown are:

- Beijing Yue Bin Ge Courtyard Hotel** (1 star): Price for 2 nights ¥23,041. Includes breakfast and a Genius discount.
- Guipu Beihai Courtyard Hotel** (2 star): Price for 2 nights ¥25,601. Includes breakfast and a Genius discount.
- Jinjiang Inn Beijing Zoo** (3 star): Price for 2 nights ¥30,173. Includes breakfast and a Genius discount.
- Beijing New Century Hotel** (4 star): Price for 2 nights ¥63,481. Includes breakfast and a Genius discount.
- Kelly's Courtyard Hotel** (5 star): Price for 2 nights ¥27,343. Includes breakfast and a Genius discount.

**Price for 2 nights summary:**

- Original price: ¥26,926
- Discount (15% off): -¥4,039
- Final price: ¥22,887
- Taxes and fees: +¥3,799
- Total amount: ¥26,686

**Please note that fees may be charged in addition to the room charge.**